



## **Decision Support Briefing for SnowEx (NASA) – 12 February, 2017**

### **Overview**

A closed low will travel through New Mexico Monday and circulation around that low will continue bringing low clouds and some precipitation to western CO. The Senator Beck area on Monday will remain obscured with low ceilings and periods of snowfall. The Grand Mesa will see slow improvement in the afternoon, but will still remain cloudy through the day. High pressure will bring clearing skies to the region Tuesday - with some lingering orographic stratocumulus clouds at times as well as scattered high and mid clouds over the higher terrain through Friday. Temperatures will also warm to more normal temperatures for this time of year.

### **Local Weather Hazards for 10 Miles NNW Cedaredge CO (Grand Mesa at Mesa/Delta Co Line)**

[Hazardous Weather Outlook](#)

### **National Weather Service Forecast for 10 Miles NNW Cedaredge CO (Grand Mesa at Mesa/Delta Co Line)**

For the latest forecast, go to:

<http://forecast.weather.gov/MapClick.php?lat=39.027&lon=-108.02>

**This Afternoon:** Snow showers likely. Cloudy, with a high near 38. South wind around 5 mph. Chance of precipitation is 70%. Total daytime snow accumulation of 1 to 3 inches possible.

**Tonight:** Snow showers likely, mainly before 10pm. Cloudy, with a low around 26. South wind around 5 mph becoming north northwest after midnight. Chance of precipitation is 60%. New snow accumulation of 1 to 3 inches possible.

**Monday:** Scattered snow showers before noon, then scattered rain and snow showers between noon and 4pm, then scattered snow showers after 4pm. Mostly cloudy, with a high near 35. North wind 5 to 10 mph becoming south in the morning. Chance of

precipitation is 30%.

**Monday Night:** A 30 percent chance of snow showers, mainly before 11pm. Mostly cloudy, with a low around 23. East northeast wind around 5 mph.

**Tuesday:** Mostly sunny, with a high near 35. East northeast wind around 5 mph becoming north northwest in the afternoon.

**Tuesday Night:** Mostly clear, with a low around 21.

**Wednesday:** Sunny, with a high near 37.

**Wednesday Night:** Mostly clear, with a low around 20.

**Thursday:** Sunny, with a high near 40.

**Thursday Night:** A chance of snow showers after 11pm. Partly cloudy, with a low around 25.

**Friday:** A chance of rain and snow showers. Partly sunny, with a high near 37.

**Friday Night:** Snow showers likely. Mostly cloudy, with a low around 25.

**Saturday:** Rain and snow showers likely. Mostly cloudy, with a high near 37.

**Saturday Night:** Snow showers likely. Mostly cloudy, with a low around 23.

**Sunday:** Snow showers. Cloudy, with a high near 33.

## **Local Weather Hazards for 7 Miles ENE Ophir CO (Senator Beck)**

[Winter Weather Advisory](#)  
[Hazardous Weather Outlook](#)

## **National Weather Service Forecast for 7 Miles ENE Ophir CO (Senator Beck)**

For the latest forecast, go to:

<http://forecast.weather.gov/MapClick.php?lat=37.905&lon=-107.72>

**This Afternoon:** Snow showers likely. Cloudy, with a high near 31. South wind around 10 mph. Chance of precipitation is 70%. Total daytime snow accumulation of 3 to 5 inches possible.

**Tonight:** Snow showers likely. Cloudy, with a low around 19. South wind 5 to 15 mph becoming east after midnight. Chance of precipitation is 70%. New snow accumulation of 1 to 2 inches possible.

**Monday:** Periods of snow showers. High near 27. Northeast wind around 10 mph. Chance of precipitation is 80%. New snow accumulation of 2 to 4 inches possible.

**Monday Night:** Snow showers likely, mainly before 11pm. Cloudy, with a low around 15. East wind 10 to 15 mph. Chance of precipitation is 70%. New snow accumulation of 1 to 2 inches possible.

**Tuesday:** A 30 percent chance of snow showers, mainly before 11am. Partly sunny, with a high near 26. North northeast wind around 10 mph.

**Tuesday Night:** Mostly clear, with a low around 12.

**Wednesday:** Sunny, with a high near 31.

**Wednesday Night:** Mostly clear, with a low around 16.

**Thursday:** Sunny, with a high near 36.

**Thursday Night:** A chance of snow showers after 11pm. Partly cloudy, with a low around 19.

**Friday:** A chance of snow showers. Partly sunny, with a high near 32.

**Friday Night:** Snow showers likely. Mostly cloudy, with a low around 19.

**Saturday:** Snow showers. Cloudy, with a high near 28.

**Saturday Night:** Snow showers. Cloudy, with a low around 17.

**Sunday:** Snow showers. Cloudy, with a high near 24.

## **Aviation Forecast for Grand Junction Regional Airport**

```
KGJT 122336 AAD
TAFGJT
TAF AMD
KGJT 122336Z 1300/1324 VRB03KT P6SM VCSH OVC060
    FM130200 06005KT P6SM BKN060
    FM131000 11005KT P6SM SCT060 BKN150
    FM131900 36006KT P6SM SCT080=
```

## **Aviation Forecast for Colorado Springs Airport**

```
KCOS 122328Z 1300/1324 18012KT P6SM SCT030 BKN080
    FM130300 14006KT P6SM SCT050 BKN100
    FM131500 03010KT P6SM VCSH OVC050
    FM131900 01014KT P6SM SCT050 BKN100=
```

## **Aviation Forecast for Centennial Airport**

```
KAPA 122328Z 1300/1324 VRB06KT P6SM FEW080 BKN220
    FM130200 19009KT P6SM FEW080 BKN220
    FM131200 34006KT P6SM FEW120 BKN220
    FM131700 02010KT P6SM FEW120 BKN220=
```

## **Discussion**

Grand Mesa forecast cloud levels:

Monday: OVC 1000 ft AGL or less until about noon then lifting to 1000 to 3000 ft AGL.

Senator Beck forecast cloud levels:

Monday: Remaining 1000 ft AGL or less through the day.

Current PIREPs: <https://www.aviationweather.gov/airep/plot?type=turb@ion=SW>

Current SITREPs: <https://www.aviationweather.gov/sigmet>

Current radar:

<http://radar.weather.gov/radar.php?rid=GJX&product=NCR&overlay=11101111&loop=yes>

Current satellite: <http://www.weather.gov/satellite?image=ir#ir>

For official pilot briefings, call 1-800-WX-BRIEF

## **For Further Information**

- Contact National Weather Service operations 24 hours a day at 970-256-9463 (unlisted)
- For specific support of emergency response incidents, request a spot forecast by contacting the NWS forecast office by phone or online.
- Online spot forecast request available at:  
<http://www.weather.gov/spot/monitor/?lat=39.0293452169889&lon=-109.20392753906285&z=7>

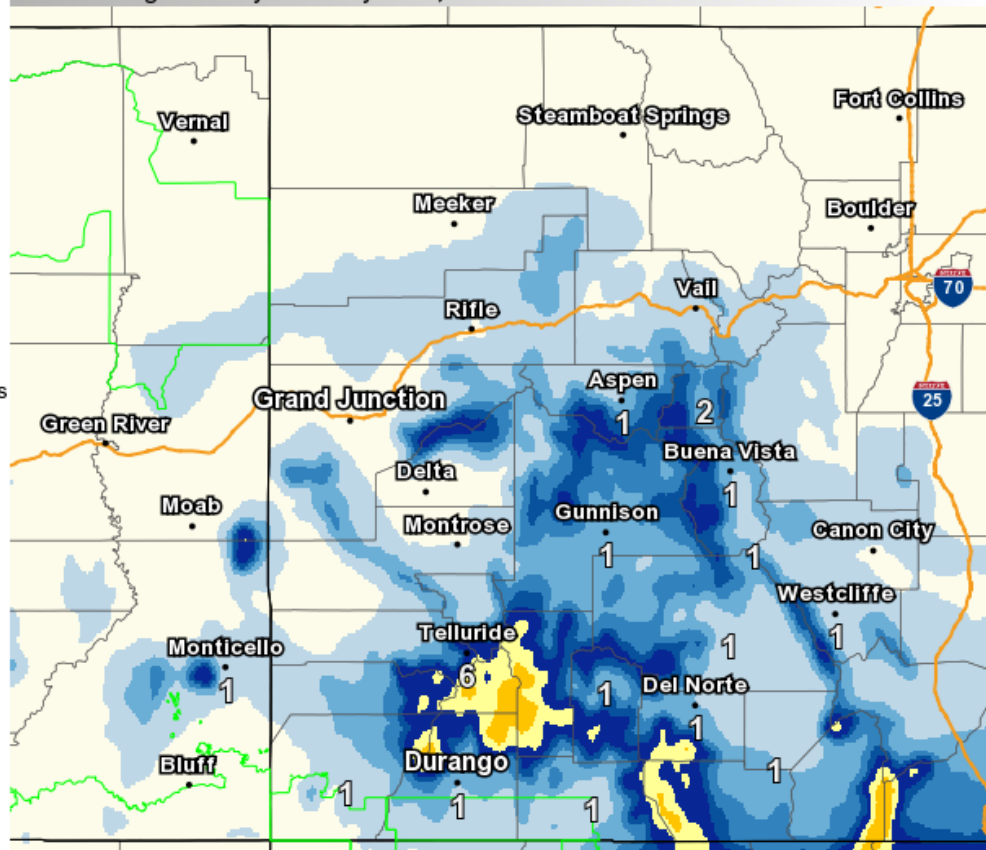
**Forecaster:** Christopher Cuoco

# Forecast Snowfall



Valid Ending Tuesday February 14th, 2017 at 5 PM MST

- Less than an inch
- 1 to 2 inches
- 2 to 3 inches
- 3 to 4 inches
- 4 to 6 inches
- 6 to 8 inches
- 8 to 12 inches
- 12 to 18 inches
- 18 to 24 inches
- 24 to 30 inches
- 30 to 36 inches
- Greater than 36 inches



Graphic Created  
February 12th, 2017  
4:45 PM MST