



## **Decision Support Briefing for SnowEx (NASA) – 18 February, 2017**

### **Overview**

...Once Again Updated Snow Amounts over Grand Mesa for Tonight Period... Moist southerly flow will continue tonight ahead of a weather system over the Southwest U.S. However only scattered snow showers are expected through the night. The last and strongest phase of the weather system will begin to impact the Senator Beck area Sunday morning, then the Grand Mesa by early afternoon. Expect a rapid increase in snowfall during these periods and lasting through Sunday night. Isolated to scattered Thunderstorms will also be possible on Sunday. Upper level flow remains from the southwest then transitions to northwest Sunday evening. This switch in flow will signal the cold frontal passage with snow falling across most of western Colorado down to 7000 ft. Snowfall totals are expected to be 4 to 8 inches on the Grand Mesa and 6 to 12 inches in the Senator Beck vicinity. Conditions will clear out on Monday and into early Tuesday before the next weather system with chance of snow showers moves in late Tuesday and continues through Thursday.

### **Local Weather Hazards for 10 Miles NNW Cedaredge CO (Grand Mesa at Mesa/Delta Co Line)**

[Hazardous Weather Outlook](#)  
[Winter Weather Advisory](#)

### **National Weather Service Forecast for 10 Miles NNW Cedaredge CO (Grand Mesa at Mesa/Delta Co Line)**

For the latest forecast, go to <http://forecast.weather.gov/MapClick.php?lat=39.027&lon=-108.02>

**Tonight:** Scattered snow showers. Cloudy, with a low around 26. South wind 10 to 15 mph. Chance of precipitation is 50%. Total nighttime snow accumulation of less than one inch possible.

**Sunday:** A chance of snow showers before 11am, then rain and snow showers likely between 11am and 2pm, then snow showers after 2pm. Some thunder is also possible. High near 36. South wind 5 to 15 mph. Chance of precipitation is 80%, best possibility in the afternoon . New snow accumulation of 1 to 3 inches possible.

**Sunday Night:** Periods of snow showers, mainly before 11pm. Low around 20. Blustery, with a northwest wind 5 to 10 mph increasing to 15 to 20 mph in the evening. Winds could gust as high as 35 mph. Chance of precipitation is 80%. New snow accumulation of 2 to 4 inches possible.

**Washington's Birthday:** Isolated snow showers before 11am. Mostly sunny, with a high near 35. West wind around 10 mph becoming south southwest in the afternoon. Chance of precipitation is 10%.

**Monday Night:** Mostly cloudy, with a low around 26. Southwest wind 10 to 15 mph.

**Tuesday:** A chance of rain and snow showers, mainly after 5pm. Partly sunny, with a high near 38. Chance of precipitation is 30%.

**Tuesday Night:** A chance of rain and snow showers before 7pm, then a chance of snow showers. Mostly cloudy, with a low around 28. Chance of precipitation is 40%.

**Wednesday:** A chance of rain and snow showers before noon, then a chance of rain showers between noon and 3pm, then a chance of rain and snow showers after 3pm. Some thunder is also possible. Mostly cloudy, with a high near 38.

**Wednesday Night:** A chance of snow showers. Cloudy, with a low around 20.

**Thursday:** A chance of snow showers. Cloudy, with a high near 25.

**Thursday Night:** A chance of snow showers. Mostly cloudy, with a low around 11.

**Friday:** Partly sunny, with a high near 23.

**Friday Night:** Partly cloudy, with a low around 14.

**Saturday:** Partly sunny, with a high near 27.

## **Local Weather Hazards for 7 Miles ENE Ophir CO (Senator Beck)**

[Hazardous Weather Outlook](#)

[Winter Weather Advisory](#)

## **National Weather Service Forecast for 7 Miles ENE Ophir CO (Senator Beck)**

For the latest forecast, go to <http://forecast.weather.gov/MapClick.php?lat=37.905&lon=-107.72>

**Tonight:** Snow showers likely, mainly after 9pm. The snow could be heavy at times. Widespread blowing snow, mainly after 5am. Cloudy, with a low around 20. Windy, with a south wind 20 to 30 mph, with gusts as high as 50 mph. Chance of precipitation is 70%. Total nighttime snow accumulation of 1 to 3 inches possible.

**Sunday:** Snow showers. The snow could be heavy at times. Some thunder is also possible. Widespread blowing snow, mainly before 7am. High near 27. Breezy, with a south southeast wind 15 to 20 mph, with gusts as high as 35 mph. Chance of precipitation is 90%, best possibility late morning into the afternoon. New snow accumulation of 4 to 8 inches possible.

**Sunday Night:** Periods of snow showers. Some thunder is also possible. Widespread blowing snow, mainly between 8pm and 11pm. Low around 13. Blustery, with a west northwest wind 20 to 25 mph becoming west northwest 10 to 15 mph after midnight. Winds could gust as high as 40 mph. Chance of precipitation is 90%. New snow accumulation of 2 to 4 inches possible.

**Washington's Birthday:** Isolated snow showers before 11am. Mostly sunny, with a high near 28. West southwest wind around 15 mph. Chance of precipitation is 20%.

**Monday Night:** Partly cloudy, with a low around 20. West wind around 15 mph.

**Tuesday:** A 20 percent chance of snow showers. Mostly sunny, with a high near 34.

**Tuesday Night:** A 50 percent chance of snow showers. Mostly cloudy, with a low around 24. Breezy.

**Wednesday:** A chance of snow showers. Some thunder is also possible. Mostly cloudy, with a high near 30. Breezy.

**Wednesday Night:** A chance of snow showers. Mostly cloudy, with a low around 13. Breezy.

**Thursday:** Snow showers likely, mainly before 11am. Cloudy, with a high near 17. Breezy.

**Thursday Night:** A chance of snow showers. Mostly cloudy, with a low around 4. Blustery.

**Friday:** Mostly sunny, with a high near 17.

**Friday Night:** Partly cloudy, with a low around 8. Breezy.

**Saturday:** Mostly sunny, with a high near 20. Breezy.

## **Aviation Forecast for Grand Junction Regional Airport**

KGJT 182338

TAFGJT

TAF

KGJT 182338Z 1900/1924 30008KT P6SM VCSH BKN080 OVC100

FM190100 07005KT P6SM VCSH SCT035 BKN100 OVC150

FM190800 11005KT 5SM -SHRA SCT035 OVC080

FM191300 13004KT P6SM SCT100

FM192000 19008KT P6SM -SHRA BKN025 OVC050

FM192200 26008KT P6SM -RA BKN020 OVC035=

## **Aviation Forecast for Colorado Springs Airport**

KCOS 181741Z 1818/1918 05006KT P6SM SCT140 BKN200

FM181900 16010G20KT P6SM SCT080 BKN100

FM190100 14007KT P6SM SCT080 BKN140  
FM190300 12007KT P6SM SCT080 BKN140=

## Aviation Forecast for Centennial Airport

KAPA 182339Z 1900/1924 17015G22KT P6SM FEW100 SCT150 BKN220  
FM190200 18013KT P6SM FEW120 SCT220  
FM190500 21011KT P6SM SCT220  
FM191500 19006KT P6SM FEW220  
FM191900 17018G28KT P6SM SCT120 BKN220=

## Discussion

Grand Mesa forecast cloud levels:

Sunday: CIGS sct-bkn 1500 to 2000 ft agl in the morning becoming ovc 1000 to 1500 feet by 2100Z in snow showers.

Senator Beck forecast cloud levels:

Sunday: CIGS bkn to OVC 1000 to 1500 ft AGL in the morning becoming ovc 1000 to 1500 ft AGL by 2000Z with snow. Please keep in mind that mountain obscurations are expected by late morning.

Current PIREPS: <https://www.aviationweather.gov/airep/plot?type=turb@ion=SW>

Current SITREPS: <https://www.aviationweather.gov/sigmat>

Current radar:

<http://radar.weather.gov/radar.php?rid=GJX&product=NCR&overlay=11101111&loop=yes>

Current satellite: <http://www.weather.gov/satellite?image=ir#ir>

Hourly weather graphics for the Grand Mesa:

<http://forecast.weather.gov/MapClick.php?lat=39.0326&lon=-108.0245&unit=0&lg=english&FcstType=graphical>

Hourly weather graphics for Senator Beck:

<http://forecast.weather.gov/MapClick.php?lat=37.9247&lon=-107.7179&unit=0&lg=english&FcstType=graphical>

For official pilot briefings, call 1-800-WX-BRIEF

## For Further Information

- Contact National Weather Service operations 24 hours a day at 970-256-9463 (unlisted)
- For specific support of emergency response incidents, request a spot forecast by contacting the NWS forecast office by phone or online.
- Online spot forecast request available at:  
<http://www.weather.gov/spot/monitor/?lat=39.0293452169889&lon=-109.20392753906285&z=7>

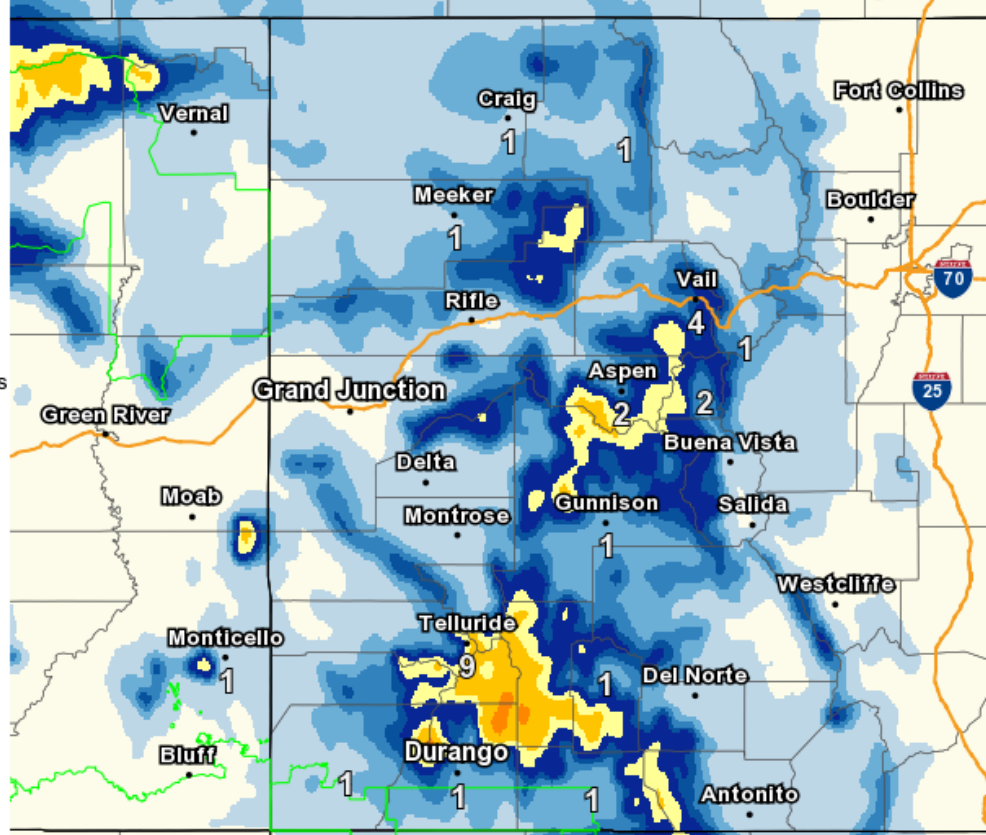
Forecaster: Larry Smith

# Forecast Snowfall



Valid Ending Monday February 20th, 2017 at 11 PM MST

- Less than an inch
- 1 to 2 inches
- 2 to 3 inches
- 3 to 4 inches
- 4 to 6 inches
- 6 to 8 inches
- 8 to 12 inches
- 12 to 18 inches
- 18 to 24 inches
- 24 to 30 inches
- 30 to 36 inches
- Greater than 36 inches



Graphic Created  
February 18th, 2017  
7:15 PM MST